

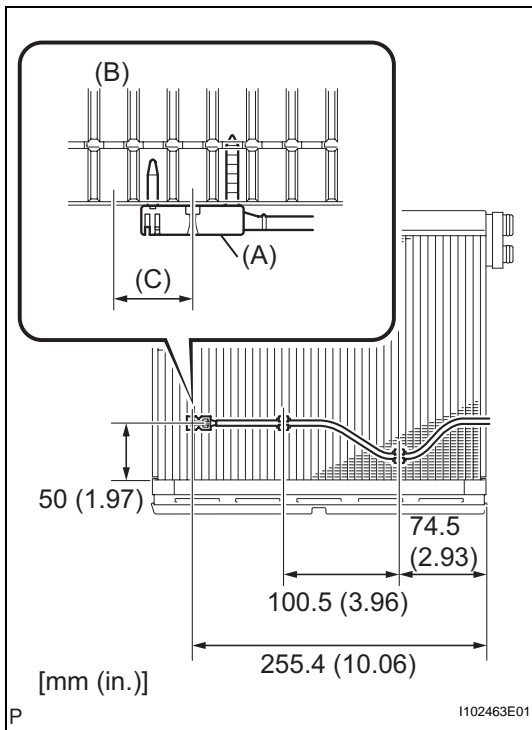
REASSEMBLY

1. INSTALL NO. 1 COOLER THERMISTOR

- Install the sensor onto the evaporator as shown in the illustration.
- Check that the sensor sticks to the evaporator surface as shown in the illustration (A: Sensor, B: Evaporator).

NOTICE:

If reusing the evaporator, do not reinsert the sensor in the same position that it was in before. Insert it within area C shown in the illustration.



2. INSTALL NO. 1 COOLER EVAPORATOR SUB-ASSEMBLY

- Apply sufficient compressor oil (ND-OIL8) to 2 new O-rings and the fitting surface of the cooler evaporator.

Compressor oil:

ND-OIL8 or the equivalent

- Install the 2 O-rings onto the cooler evaporator.
- Install the cooler evaporator.

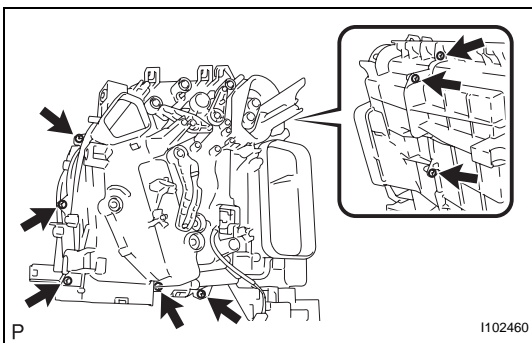
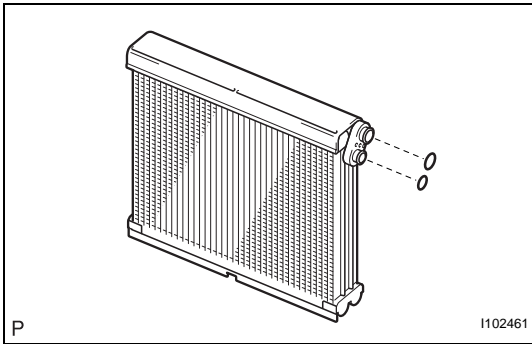
HINT:

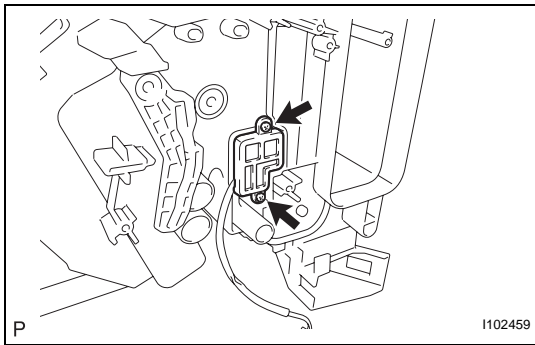
If a new cooler evaporator is installed, add compressor oil to the cooler evaporator as follows.

Compressor oil:

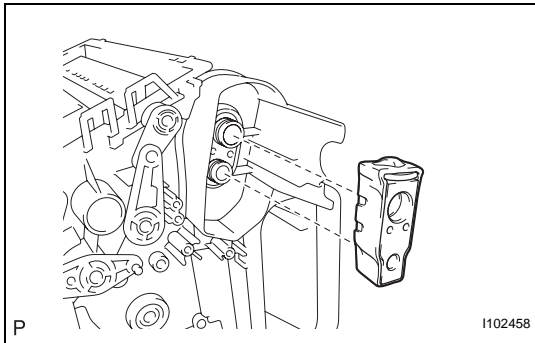
ND-OIL8 or the equivalent. Add 40 cc (1.35 fl. oz.)

- Install the cooler evaporator onto the heater case.
- Install the heater case with the 8 screws.



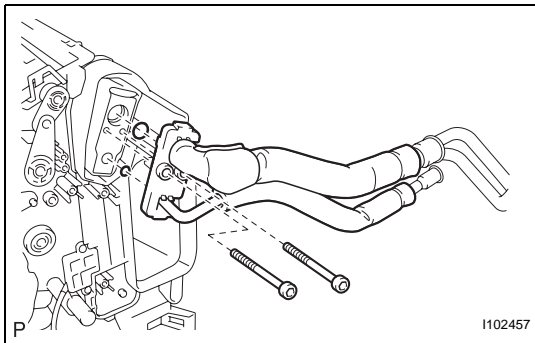


- (f) Install the plate with the 2 screws.



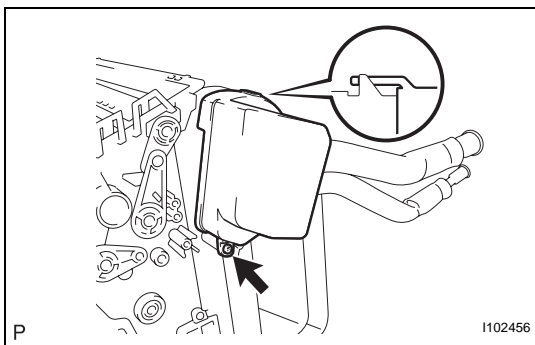
3. INSTALL COOLER EXPANSION VALVE

- (a) Apply sufficient compressor oil (ND-OIL8) to the fitting surface of the cooler expansion valve.
Compressor oil:
ND-OIL8 or the equivalent
- (b) Install the cooler expansion valve onto the cooler evaporator.



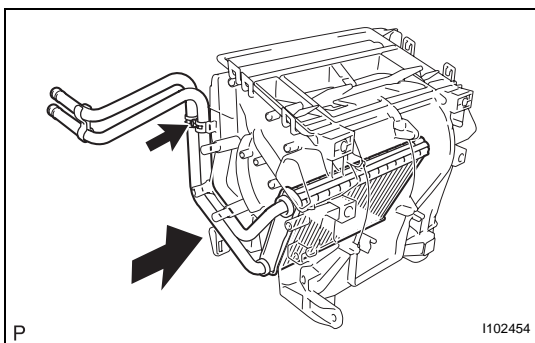
4. INSTALL AIR CONDITIONING TUBE ASSEMBLY

- (a) Apply sufficient compressor oil (ND-OIL8) to 2 new O-rings and the fitting surface of the air conditioning tube.
Compressor oil:
ND-OIL8 or the equivalent
- (b) Install the 2 O-rings onto the air conditioning tube.
- (c) Using a hexagon wrench 4, install the air conditioning tube with the 2 hexagon bolts.
Torque: 3.5 N*m (36 kgf*cm, 31 in.*lbf)



5. INSTALL COVER PLATE

- (a) Engage the claw.
- (b) Install the cover plate with the screw.



6. INSTALL HEATER RADIATOR UNIT SUB-ASSEMBLY

- (a) Install the heater radiator unit onto the heater case.
- (b) Install the clamp with the screw.